

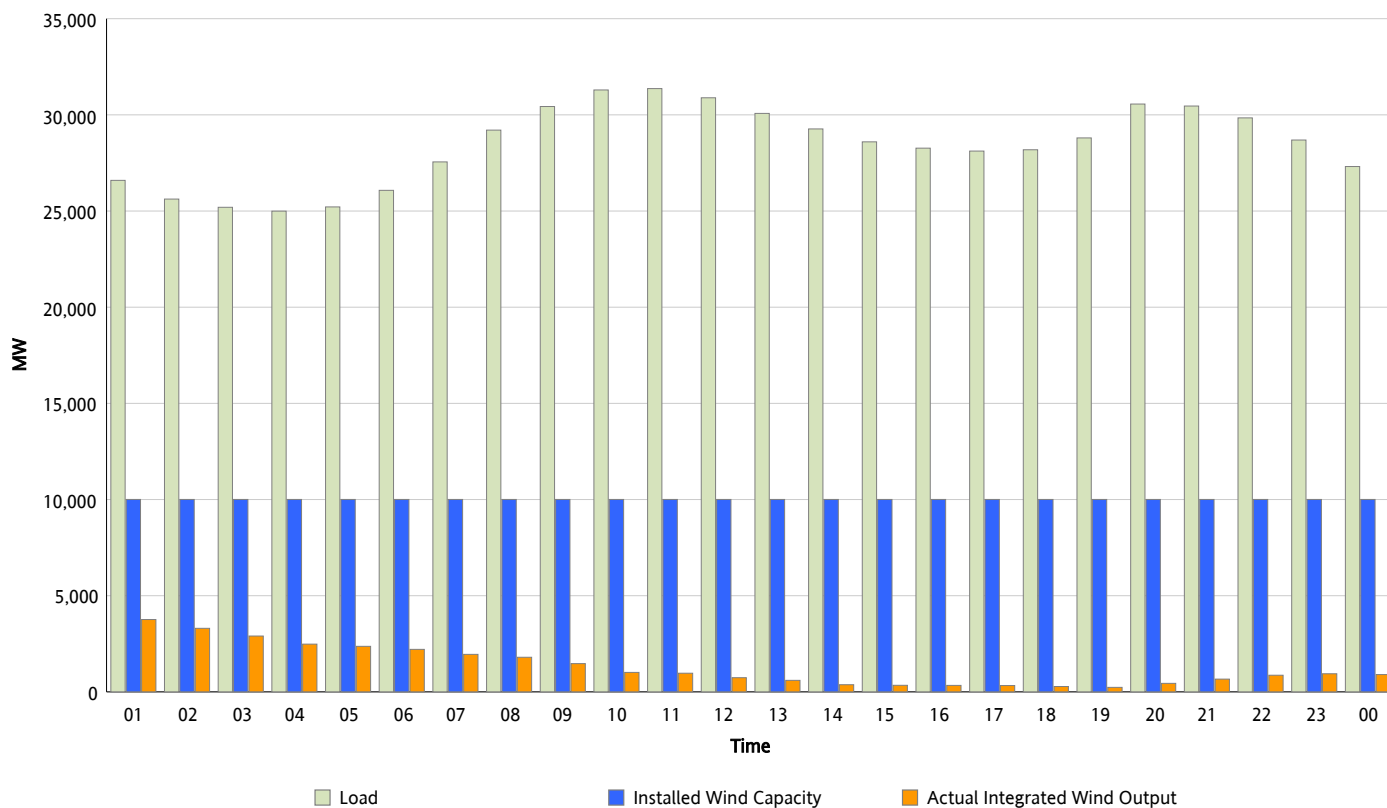


ERCOT Grid Operations

Wind Integration Report : 10/27/2012

Peak Load	31,366 MW
Load Peak Hour (HE)	11
Wind Over Peak	970 MW
Wind Record 06/19/12	8,368 MW
Max Wind Value*	3,943 MW
Wind Peak Time	00:00
Wind Integration %	14.45 %

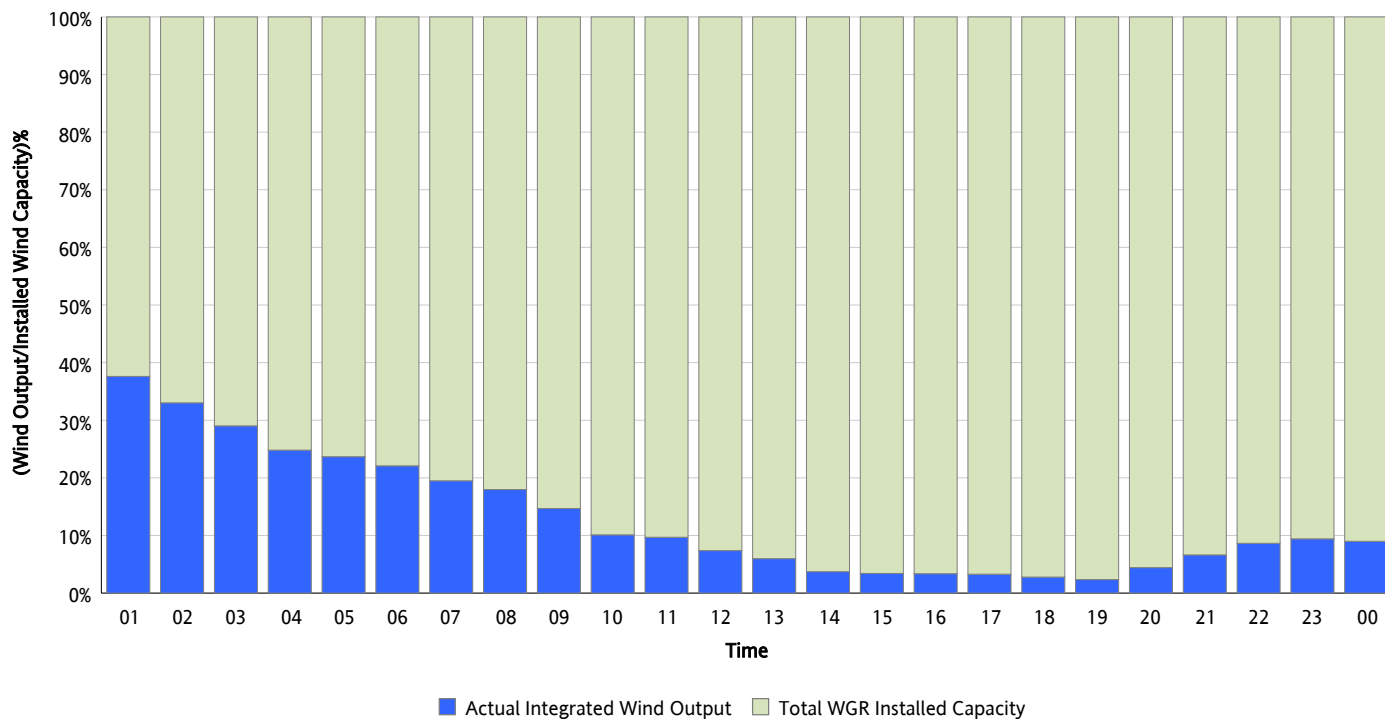
Hourly Average Actual Load vs. Actual Wind Output
10/27/2012



** Wind Record and Wind Max represent instantaneous values and the rest of the values are integrated over the hour*

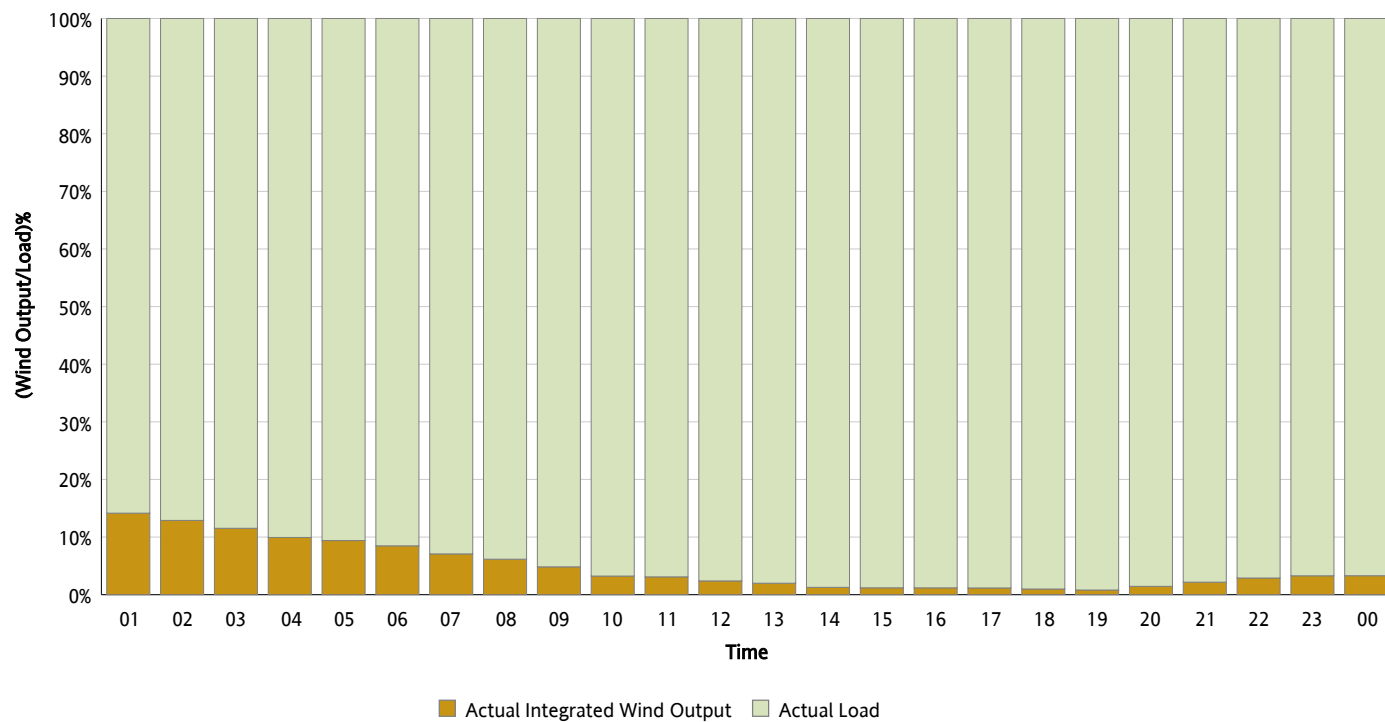
Actual Wind Output as a Percentage of the Total Installed Wind Capacity

10/27/2012



Actual Wind Output as a Percentage of the ERCOT Load

10/27/2012



ERCOT Load vs. Actual Wind Output

10/20/2012 - 10/27/2012

